



Louisiana: Leading With A Multimodal Strategy

“Enhancing connectivity across modes
for people, freight, and business”

Dr. Shawn Wilson,

Secretary



@onevisionary



LOUISIANA DEPARTMENT OF
TRANSPORTATION & DEVELOPMENT




As Secretary



@onevisionary

- ✓ **Make the case for increased revenue**
- ✓ **Maintain a balanced transportation policy for Louisiana**
- ✓ **Take full advantage of federal and local resources**
- ✓ **Advance a collaborative approach to transportation**



Louisiana Forward

JBE: First 10 Months



John Bel Edwards
Governor

- Advanced a transportation focused budget
 - Removed the state police from the TTF, ~\$70M
 - Doubled the Port Priority Program
- Bullish action on Infrastructure funding in the state's capitol outlay budget
- Better positions to advance strategically prioritized Public Private Partnerships

JBE: First 10 Months



John Bel Edwards
Governor

- Championed infrastructure issues with the President, Vice President, & USDOT Secretary
- Submitted a FASTLANE application for \$100M
- Appointed the 1st. Multimodal Commerce Commissioner
- Led a state trade mission to Cuba that was heavily attended by coastal ports.

FASTLANE Grant



- Awarded \$60 million to help widen I-10 between I-10/I-49 interchange and the Atchafalaya Basin Bridge
- Added \$40 million to the project
- Freed up state dollars
 - Construct Washington St. exit in BR
 - Advance
 - Loyola/I-10 interchange for MSY
 - I-20/220 Barksdale interchange
 - BR to NOLA grade crossings and planning
- Used FAST ACT authority to advance expired earmarks to widen I-10 from Highland to LA 73 in Baton Rouge





As DOTD



VISION

- To move Louisiana forward by delivering a safe and innovative multimodal transportation and infrastructure system



MISSION

- Plan, design, build and sustain a safe and reliable multimodal transportation and infrastructure system that **enhances mobility and economic opportunity**

Louisiana Forward

SCOPE OF RESPONSIBILITY



PORT

8 deep draft ports (incl. LDOP) **32** shallow-draft port authorities



AVIATION

7 commercial airports **62** general aviation airports



RAIL

17 freight railroads
3,465 miles of railroad track

12 urban systems

PUBLIC TRANSIT



35 rural systems

PUBLIC WORKS

Northern levee districts

555 regulated dams inspections

157 dam inspections conducted

WATERWAYS

26 DOTD oversight
2 owned & operated

LOCKS

291 deep draft river miles
1,970 miles of navigable waterways
1,679 shallow draft river miles

As Secretary of DOTD



- ✓ **Maintain a balanced transportation policy for Louisiana**
 - Departmental Restructure – Office of Multimodal Commerce Advance mobility options for people & goods
 - Implementation of the State Transportation Plan



Louisiana DOTD Multimodal Plans

Rail System Plan

Aviation System Plan

Marine Transportation
System Plan

Individual Port Master Plan

Freight Plan

Metropolitan
Transportation Plans

LA Statewide Transportation Plan

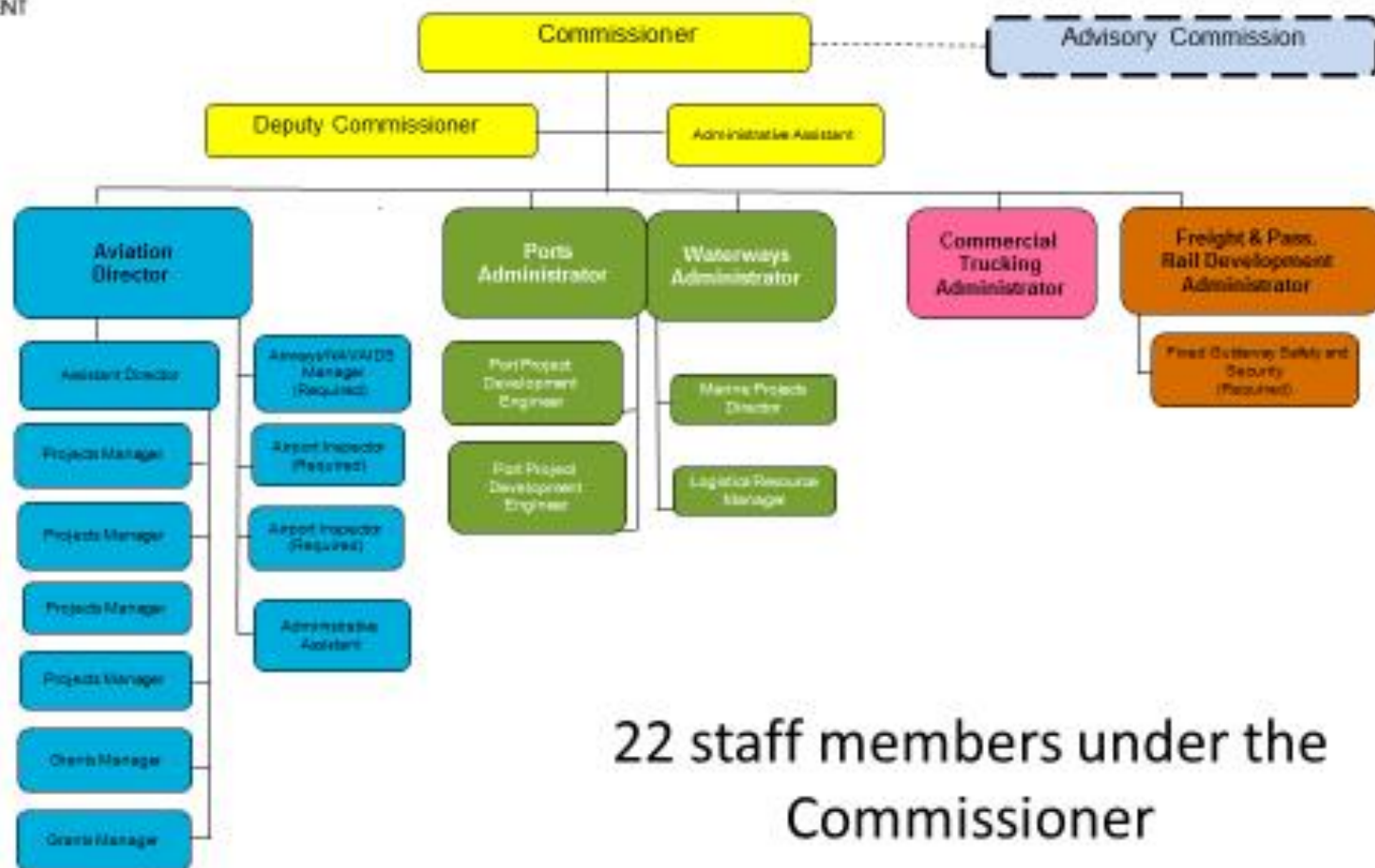


2003



2015

Office of Multimodal Commerce



22 staff members under the
Commissioner

Maximizing Multimodal Plans



Office of Multimodal Commerce to be the department's leading voice in implementing the multimodal elements of the State Plan.

- Partner with Louisiana Economic Development
- Seek win-win opportunities with the multimodal community and private sector partners



Maximizing Multimodal Plans



Operate and expand functions of the Modal Advisory Councils used in the Transportation Plan development and maintain the Multimodal Commerce Commission.

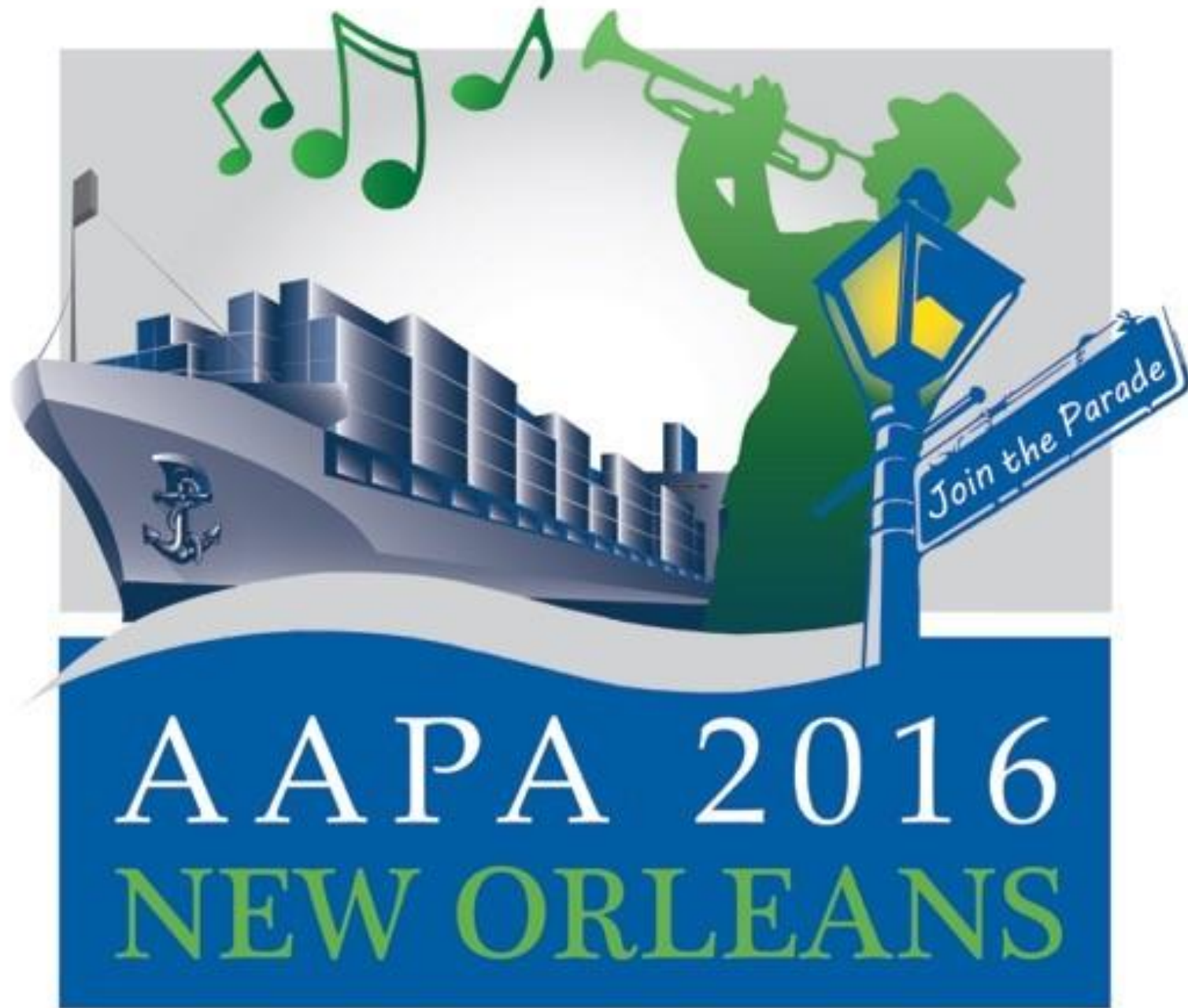




Our Commitment



- Be responsive to the needs of multimodal partners
- Make an economic development case for equitable distribution of any new funding.
- Work to integrate a multimodal philosophy and priority into the traditional transportation decision model of the department.
- Continue to avail Louisiana to federal opportunities in the FAST Act.



AAPA 2016

NEW ORLEANS